

WhatISee iPhone App

User Guide

June 2010

Version 2.0

Table of Contents

1	Overview	4
2	V2.0 Changes.....	4
3	Main Screen	5
3.1	Row & Column Labels	6
3.2	Making an Observation.....	6
3.3	Deleting the Last Observation	7
3.4	Repeating an Observation	8
3.5	Observation Reminder Timer.....	8
3.5.1	Timer Start/Stop Switch.....	8
3.5.2	Elapsed Time Counter	8
3.6	Location.....	8
3.7	Displaying & Editing Data.....	8
3.8	Setup	8
3.9	Emailing Data Files	8
4	Information Screen	8
4.1	Email Address.....	10
4.2	Timer Interval.....	10
4.3	Timer Duration.....	11
4.4	Data File Selection & Naming.....	11
4.5	Timer Enable	12
4.6	Alarm Type	12
4.7	Data File Deletion.....	13
4.8	Size of Entry Array.....	13

5	Display Data Screen	13
5.1	Data File Format.....	13
5.2	Editing Data.....	15
5.3	Horizontal Scrolling.....	15
6	Email Screen.....	16

Table of Figures

Figure 3-1	iPhone/iTouch Main Screen.....	5
Figure 3-2	iPad Main Screen	6
Figure 3-3	Data Entry Highlighting.....	7
Figure 4-1	iPhone/iTouch Setup Screen.....	9
Figure 4-2	iPad Setup Screen	10
Figure 4-3	File Picker in Setup.....	12
Figure 5-1	Data Display Screen	13
Figure 5-2	Data File Editing	15
Figure 6-1	Emailing a Data File.....	16

1 Overview

With this app you can make behavioral observations of multiple subjects in the field.

At the press of a single button you record:

- The subject
- The action or state of the subject
- The time, date, and elapsed time since starting the session
- The location: latitude, longitude, and altitude

You can edit the subject and action labels to fit your system.

Multiple observation sessions can be stored until reception at the analysis station is confirmed. Files can be transferred via email or iTunes direct connect.

The data from a session can be displayed and edited in the field before emailing.

A vibration and/or sound alarm can be turned on to remind you at intervals when to make an observation. The total length of an observing session can also be set.

2 V2.0 Changes

Version 2.0 introduces four new features:

- User defined row and column sizes for data collection. This allows the user to set the number of behaviors or subjects to more closely fit the actual situation rather than being fixed at a 5x5 array.
- Support for the iPad. This makes it practical to use much larger numbers of subjects or behaviors.
- Support for direct copying of data files to a PC through iTunes. When a device with iOS 3.2 or later connects to iTunes, the Apps tab will provide a window that allows files to be moved between the device and the PC. This will facilitate backup and analysis of data in the field where mail service from the device is not available.
- Support for use in all orientations on all devices.

Other changes:

- The ability to swipe the latest entry to delete it has been removed. Turning the unit over still acts to delete the latest entry.
- If the user attempts to email a data file and email service is not available, an error message now appears.

3 Main Screen

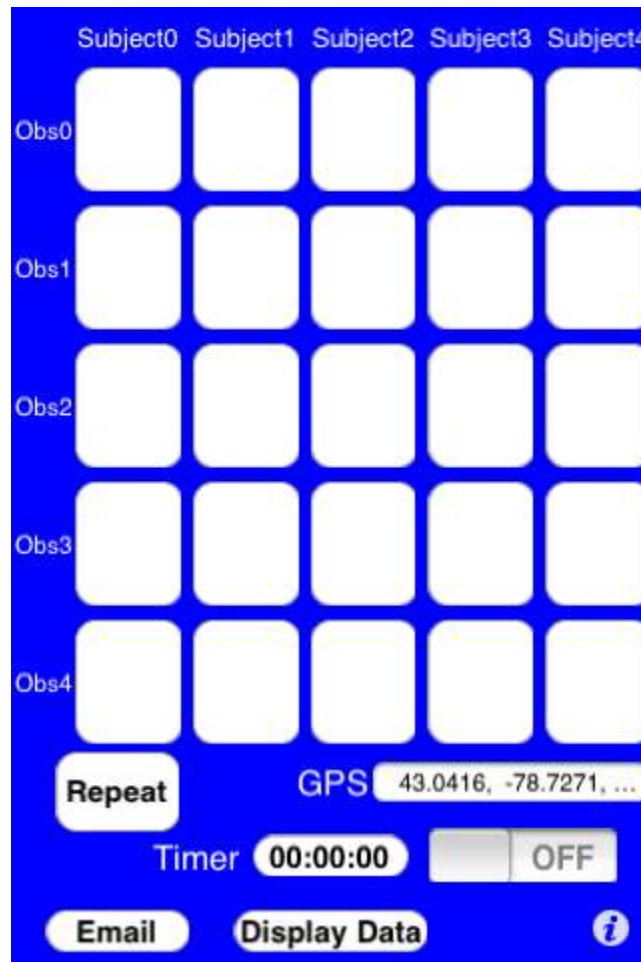


Figure 3-1 iPhone/iTouch Main Screen

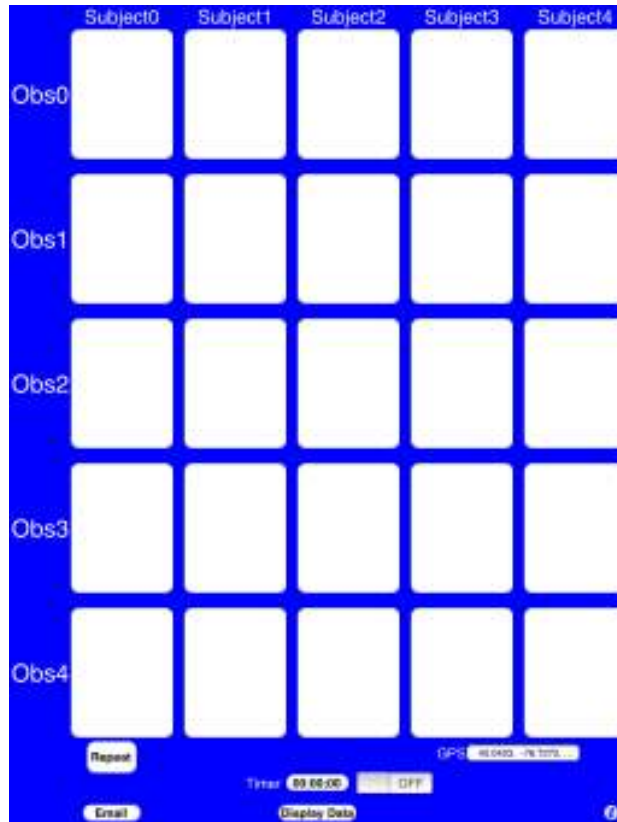


Figure 3-2 iPad Main Screen

3.1 Row & Column Labels

Any row or column label can be changed by touching the label. This brings up an editing keyboard that allows entry of any characters into a label.

Label changes remain in effect until the user changes them again.

3.2 Making an Observation

The array of blank buttons making up the majority of the screen provides the data entry method. When a button is touched, a data entry is made with the row label, column label, time & date, and location information. This entry is saved in the data file specified in the information screen.

When a successful observation has been made, an X is placed on the button.

If the timer is enabled in the Information Screen, the observation buttons will not work unless the timer is ON.

To help with finding the correct row and column in larger arrays, as soon as the user touches within the data entry array the row and column that would be selected are highlighted as shown below.



Figure 3-3 Data Entry Highlighting

In this case, Subject2 and Obs2 would be the next data entry if the user lifted their finger at this point.

As the user drags their finger within the data entry array, the highlights follow to indicate which row and column would be selected at any time. If you don't wish to make a data entry, just slide your finger outside the array and the highlights will disappear. Once the highlights have disappeared, lifting your finger will not cause a data entry to be made.

3.3 Deleting the Last Observation

The last data entry may be marked as deleted by turning the unit face down for approximately two seconds.

When the deletion completes a D is placed on the button.

If the user enters any of the other screens after a data entry has been made, the entry is committed and cannot be deleted by this method. The entry can still be erased by editing in the Display Screen.

3.4 Repeating an Observation

Touching the Repeat button creates a data entry with the same row and column label information as the previous but with the current time and location.

3.5 Observation Reminder Timer

3.5.1 Timer Start/Stop Switch

Touching this switch toggles the timer between off and on. When the timer is on an alarm of the type specified in the Information Screen is generated at the end of each interval (also specified in the Information Screen). Once the duration specified in the Information Screen is exceeded, the timer is automatically switched off.

If the timer is enabled in the Information Screen, the observation buttons will not work unless the timer is ON.

If the timer is disabled in the Information Screen, this switch will not turn ON.

3.5.2 Elapsed Time Counter

When the timer is ON, the elapsed time is displayed on the button next to the timer switch. This display is either a count-down or count-up. Touching the display will toggle between the two counter types.

3.6 Location

This field displays the current latitude and longitude of the user's location. If the geographical location is not available, an error message is displayed instead.

3.7 Displaying & Editing Data

Touching the Display Data button activates a screen that allows viewing and editing of the current data file. (See Display Data Screen for details)

3.8 Setup

Touching the small "I" in the lower right corner of the screen activates the setup screen. (See Information Screen for details)

3.9 Emailing Data Files

Touching the Email button in the lower left corner of the screen activates an email composition screen. (See Email Screen for details)

4 Information Screen



Figure 4-1 iPhone/iTouch Setup Screen

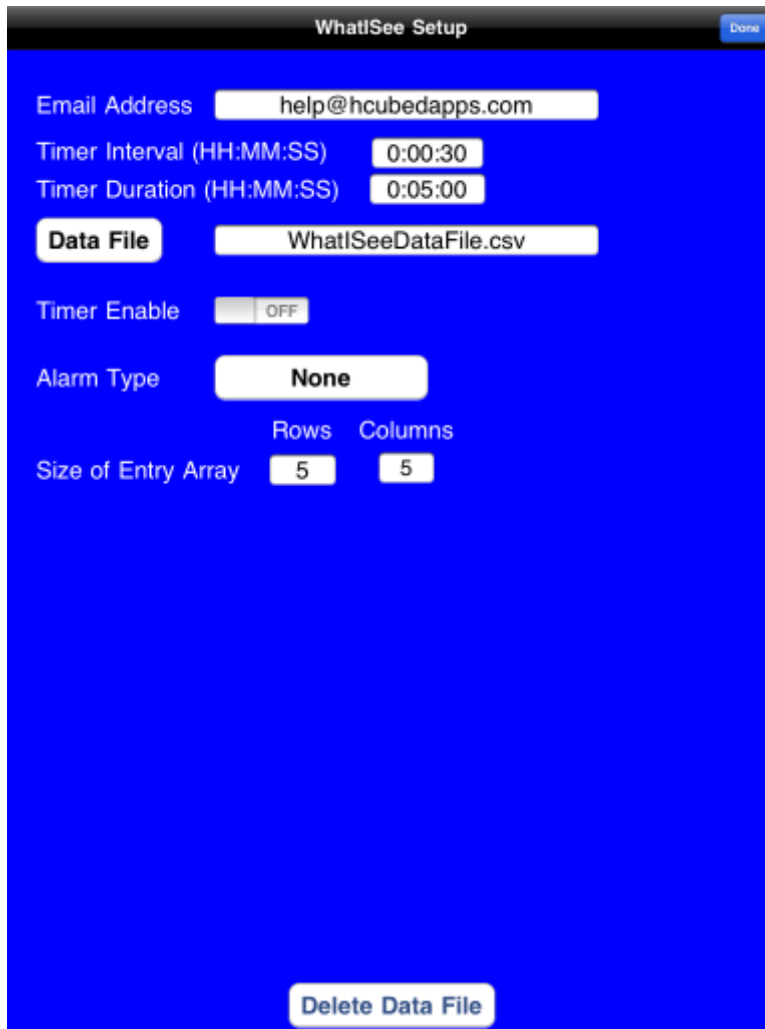


Figure 4-2 iPad Setup Screen

4.1 Email Address

Touching the field just below the Email Address label brings up an editing keyboard that allows the user to enter any email address desired. This address will be used as the default when creating an email to send a data file.

4.2 Timer Interval

This field is used to enter the time between observation reminder alarms. The format is hours, minutes, and seconds: HH:MM:SS. You can enter the following abbreviated forms:

- MM:SS
- SS

A time field can contain any number and the overall time will be converted to the appropriate HH:MM:SS format. Examples:

- 100:0 would be read as 100 minutes and redisplayed as 1:40:00
- 3600 would be read as 3600 seconds and redisplayed as 1:00:00

4.3 Timer Duration

This field is used to enter the duration of an observing session. The format is hours, minutes, and seconds: HH:MM:SS. You can enter the following abbreviated forms:

- MM:SS
- SS

A time field can contain any number and the overall time will be converted to the appropriate HH:MM:SS format. Examples:

- 100:0 would be read as 100 minutes and redisplayed as 1:40:00
- 3600 would be read as 3600 seconds and redisplayed as 1:00:00

4.4 Data File Selection & Naming

The current data file name can be edited by touching the file name field. This brings up an editing keyboard to allow the user to make any changes desired.

If you just want to use an existing file, touch the Data File label button. This brings up a rotating picker tool that allows selection of any existing data file.

When the picker is rotated and stops on a file name, the current file name field is updated with that name.

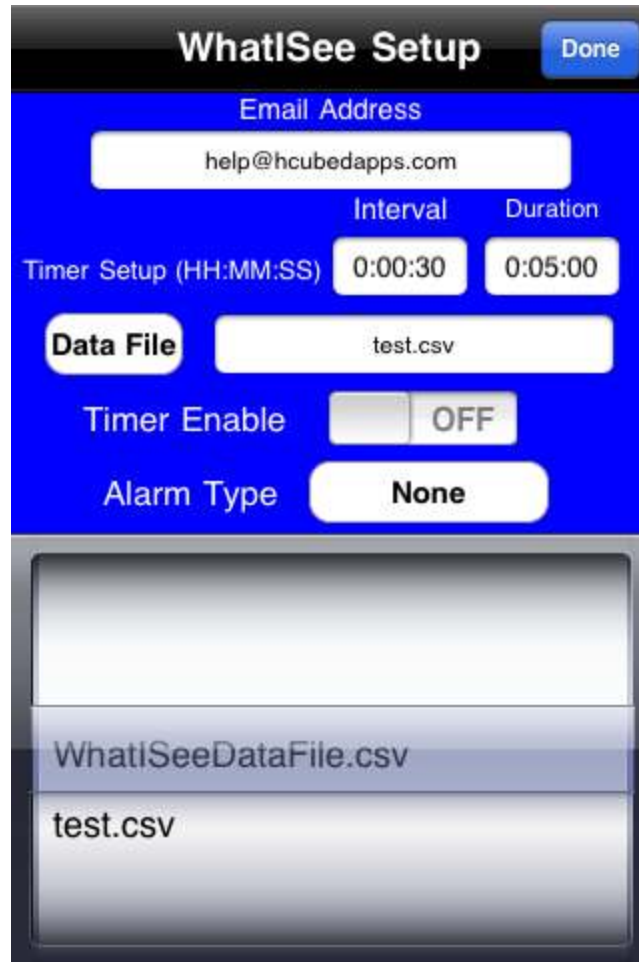


Figure 4-3 File Picker in Setup

4.5 Timer Enable

When the Timer Enable switch is ON the timer start switch in the Main Screen becomes active.

4.6 Alarm Type

Touching the Alarm Type field cycles through the available values:

- None
- Sound
- Vibrate
- Sound & Vibrate

If any option with Sounds is chosen, the volume of the sound can be controlled with the hardware volume controls on the unit.

NOTE: Vibrate options are only available on the iPhone, not on the iTouch.

4.7 Data File Deletion

Touching the Dele Data File button brings up a confirmation screen. Pressing “OK” on this screen causes the deletion of the current data file.

4.8 Size of Entry Array

These two fields allow the user to specify the number of rows and columns in the array of data entry buttons in the main screen.

NOTE: Because of memory and processing limits, the maximum size for either rows or columns is 25 for the iPhone/iTouch and 50 for the iPad.

5 Display Data Screen

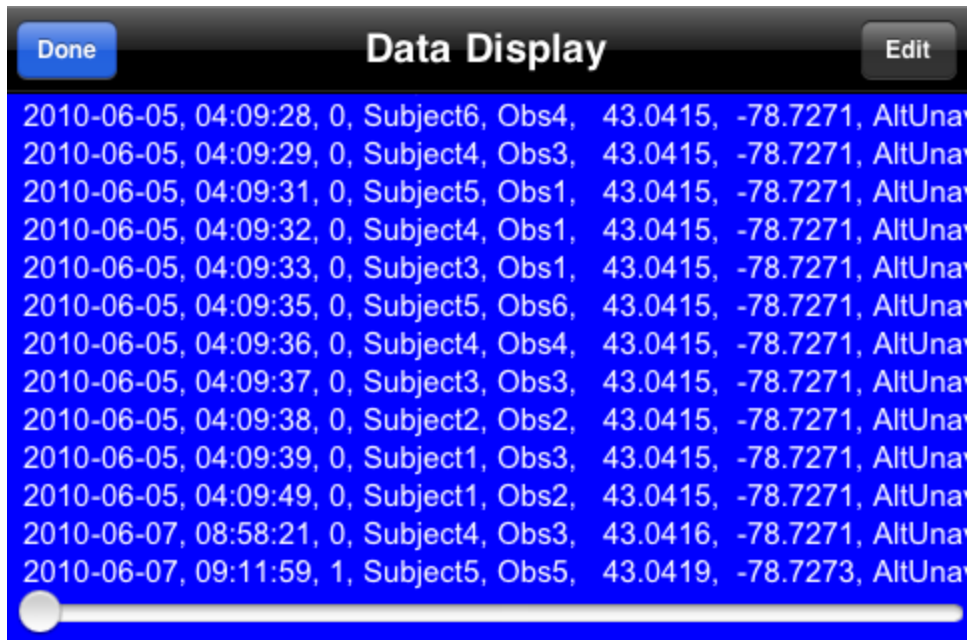


Figure 5-1 Data Display Screen

5.1 Data File Format

The data file is a comma separated variable (CSV) type file that can be directly imported into spreadsheet programs such as Microsoft Excel. Each time a data button the main screen is touched the following information is entered as a row in the file:

Date, Time, Elapsed Time, Column Label, Row Label, Latitude, Longitude, Altitude, DeletionMarker

Date: The date when the data was collected is recorded in the format of YYYY-MM-DD.

Time: The time of data collection is recorded in a 24-hour format as HH:MM:SS.

Elapsed Time: This is the time since Timer Start was touched, in seconds. If the timer is not in use, this field will always be zero.

Column Label: This is the label displayed at the top of the column of the data button touched.

Row Label: This is the label displayed at the left of the row of the data button touched.

Latitude: Decimal latitude in degrees of the location at the time of data collection.

Longitude: Decimal longitude in degrees of the location at the time of data collection.

Altitude: The altitude in meters at the time of data collection.

DeletionMarker: This is YES if the user has deleted the data point or NO if the user has not. This allows the user to filter out deleted data for analysis but prevents inadvertent deletions from actually removing valid data.

5.2 Editing Data



Figure 5-2 Data File Editing

Touching the Edit button on the right side of the status bar activates the editing mode. Touching the data screen at any point brings up an editing keyboard that allows entering and deleting text.

This mode can be used to enter header information at the beginning of a new data file prior to making any observations. This information can also be entered at any time by editing the data file and touching the beginning of the file as the edit point.

5.3 Horizontal Scrolling

The scroll bar at the bottom of the screen can be used to move the view horizontally to view information at the end of a data entry or to select the end of an entry to enter comments.

When the Save button is touched, the changes are saved to the current data file.

When the Data Display button is pressed, any unsaved changes will be discarded.

6 Email Screen



Figure 6-1 Emailing a Data File

The email created defaults to the address specified in the Information Screen and attaches the current data file.

The user can edit any of the fields except the attached data file before SENDING the email.